

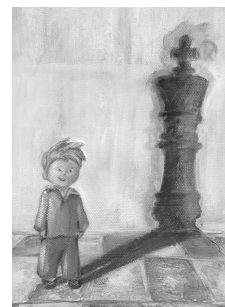
Cours de jeu d'échecs

Exercices



BIELIK Frédéric





Remerciements.

Ce document a été réalisé sous l'impulsion de Hainaut Culture Tourisme (secteur éducation permanente), de la commune d'Estinnes, de la Fédération Échiquéenne Francophone de Belgique et de a1-h8 asbl ; avec le soutien du Plan de Cohésion Sociale

Je remercie tout particulièrement Aurore Gillet, Frédéric Belva et Raymond Van Melsen pour leurs conseils avisés.



Nom :

7

Prénom :

Classe :

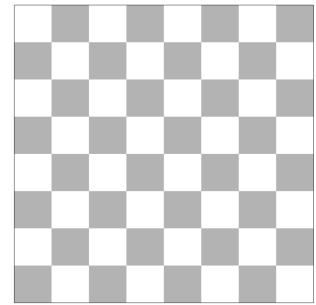
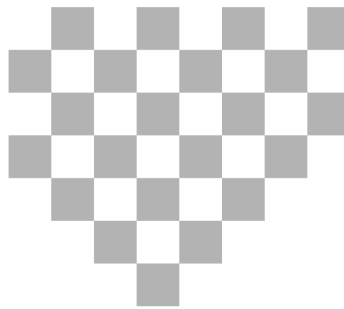
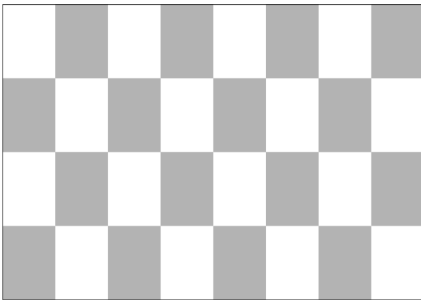
Date :

L'échiquier

/10

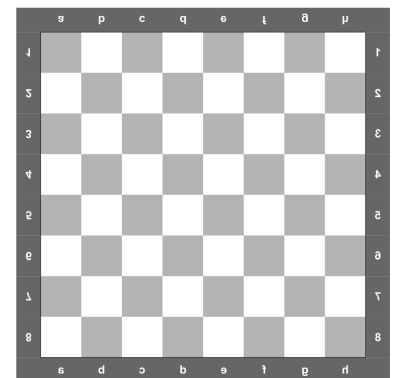
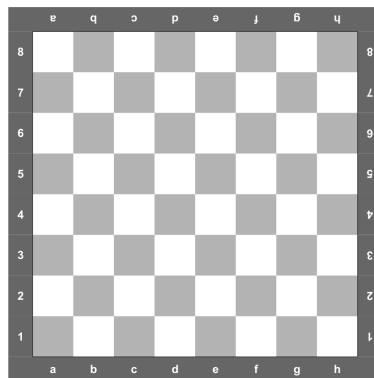
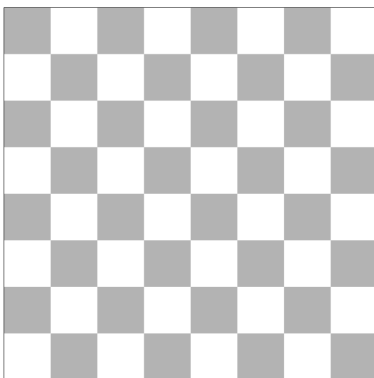
1. Lequel de ces diagrammes représente un échiquier ?

/2



2. Lequel de ces échiquiers est bien positionné ?

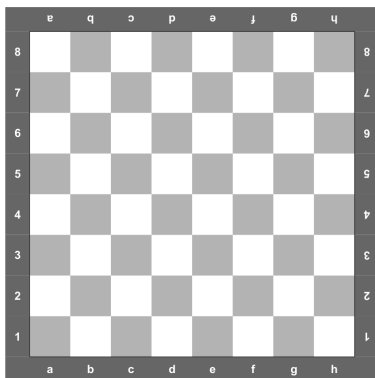
/2



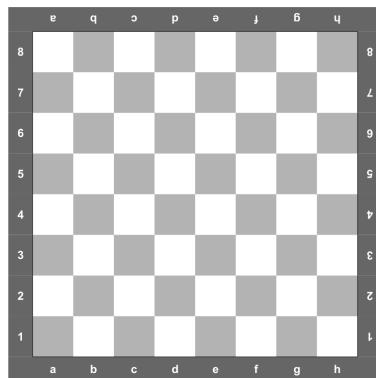
3. Diagramme 1 – Colorie en jaune les colonnes b et g et en rouge, les cases d4 et h3. /2

Diagramme 2 – Colorie en vert les rangées 2 et 7 et en rouge les cases b6 et f3. /2

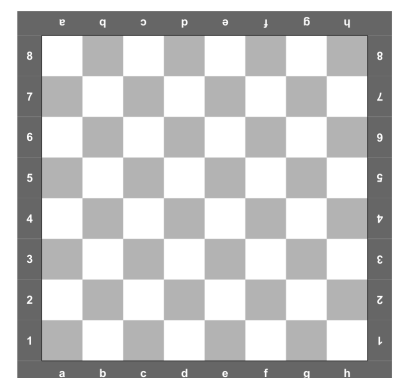
Diagramme 3 – Colorie en bleu la diagonale a1-h8 et en rouge les cases b7 et g2. /2



1



2



3





Nom :

8

Prénom :

Classe :

Date :

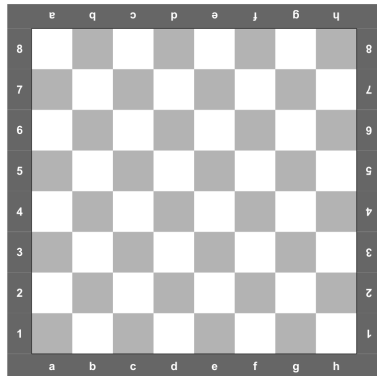
L'échiquier, suite

/10

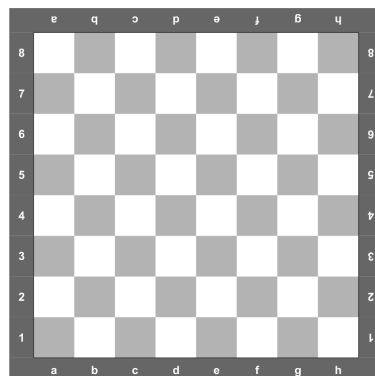
1. Diagramme 1 – Colorie en jaune l'aile Dame. /2

Diagramme 2 – Colorie en vert le camp des Noirs /2

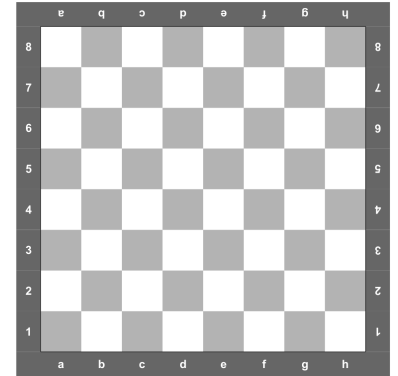
Diagramme 3 – Colorie en bleu le centre /2



1



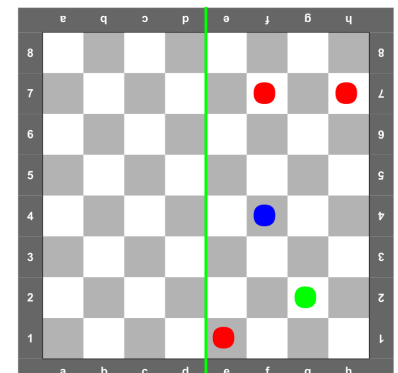
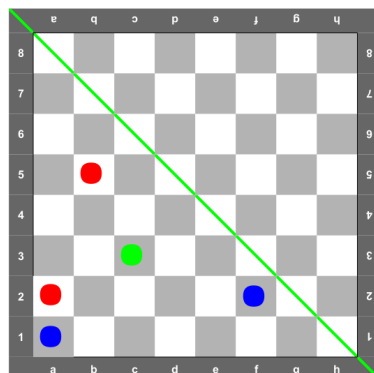
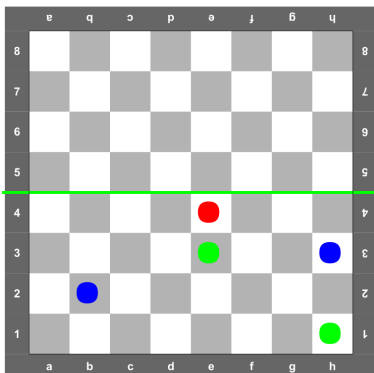
2



3

2. Effet miroir. /4

Des pastilles de couleurs se trouvent sur l'échiquier, face à un miroir représenté par la ligne verte. Représente le reflet de ces pastilles sur l'autre moitié de l'échiquier.





Nom :

10

Prénom :

Le Roi - R

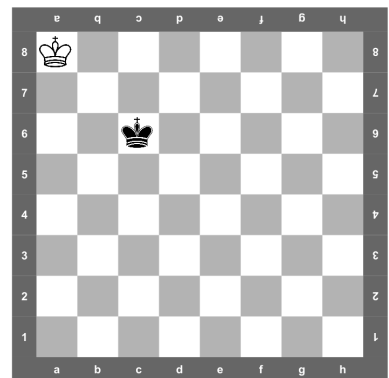
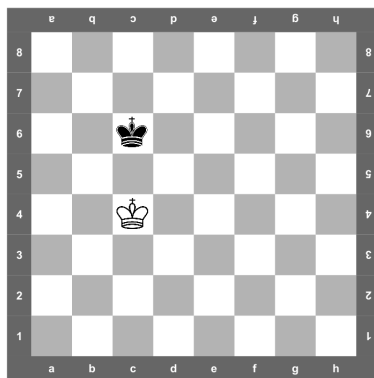
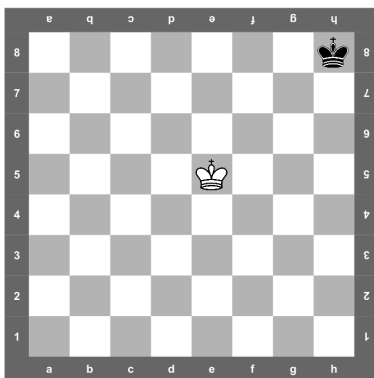
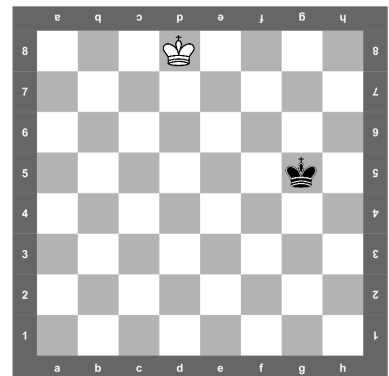
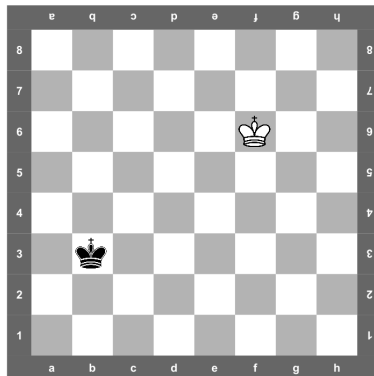
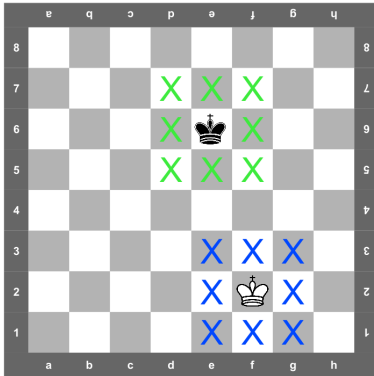
Classe :

/20

Date :

**1. Coche en bleu les cases accessibles au Roi Blanc.
Coche en vert les cases accessibles au Roi Noir.**

/10

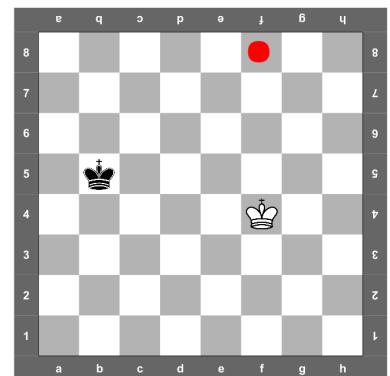
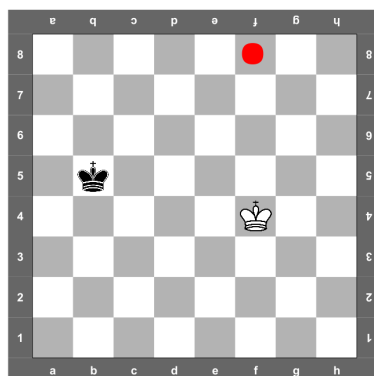
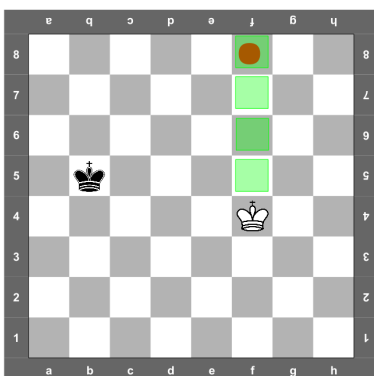


2. Le Roi Blanc doit se rendre le plus vite possible sur la case f8.

/10

La ligne droite semble le chemin le plus court. Il compte 4 cases.

Est-ce le seul ? Non. Propose 2 autres chemins de 4 cases au Roi Blanc pour atteindre f8.





Nom :

11

Prénom :

Le Roi – R, suite

Classe :

/20

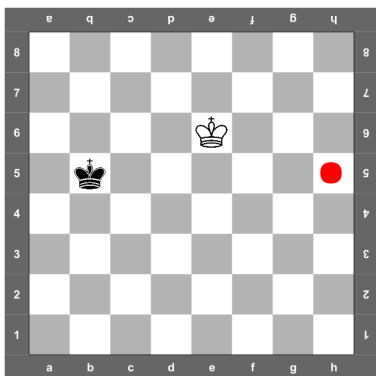
Date :

1. Écris la définition du principe d'opposition entre les 2 Rois

/2

2. Qui va capturer la pastille ? Les Blancs (B) ou les Noirs (N) ?

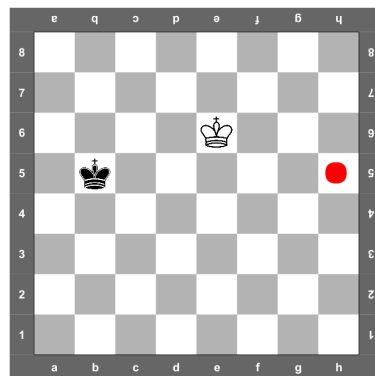
/18



Personne

B

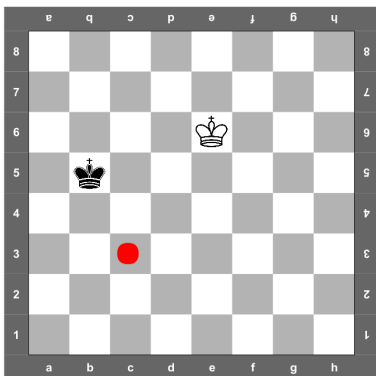
N



Personne

B

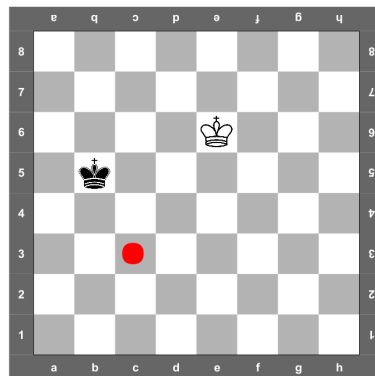
N



Personne

B

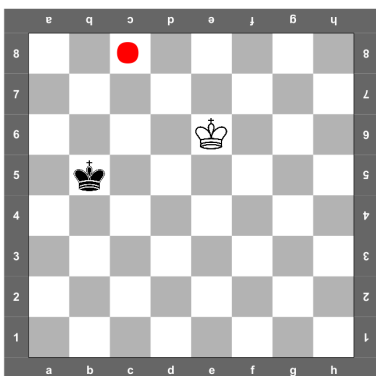
N



Personne

B

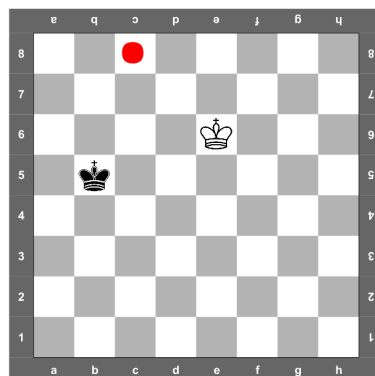
N



Personne

B

N



Personne

B

N





Nom :

13

Prénom :

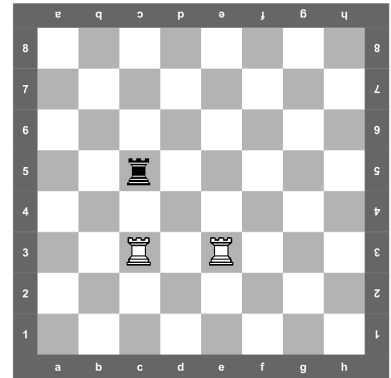
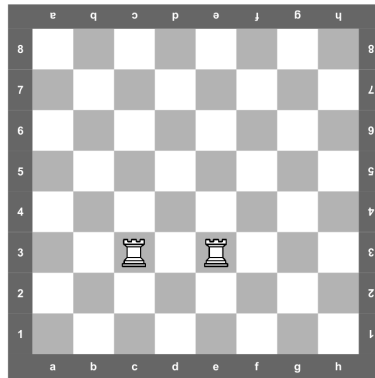
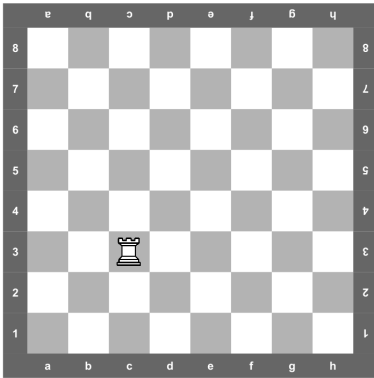
La Tour – T

Classe :

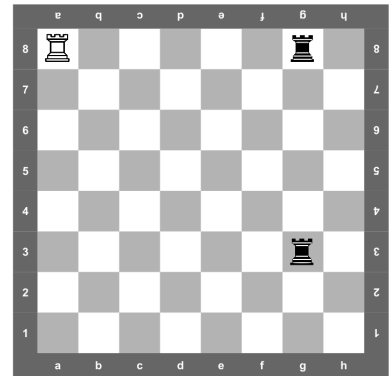
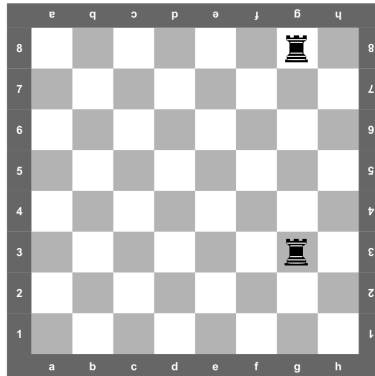
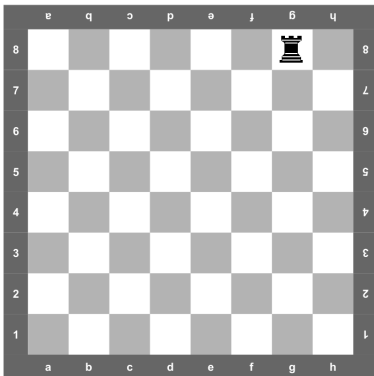
/20

Date :

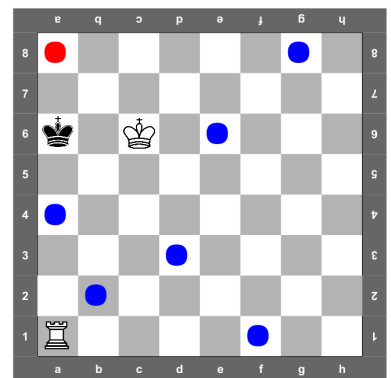
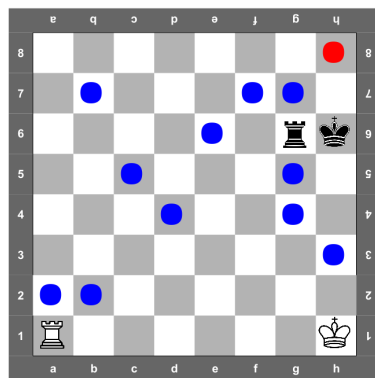
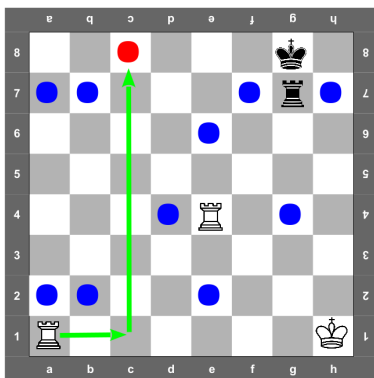
1. Indique d'une croix toutes les cases que peut atteindre la Tour Blanche située en c3 en 1 coup. /6



2. Indique d'une croix toutes les cases que peut atteindre la Tour Noire située en g8, en 1 coup. /6



3. La Tour Blanche qui est sur la case a1 doit se rendre sur la case marquée de la pastille rouge. Trace le plus court chemin. Inspire-toi du modèle. /8





Nom :

Prénom :

14

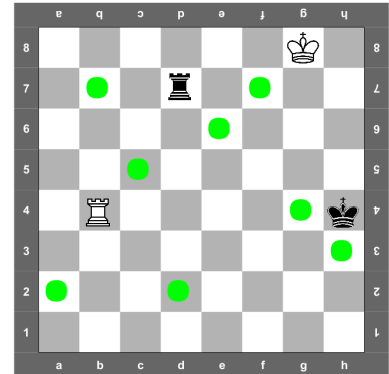
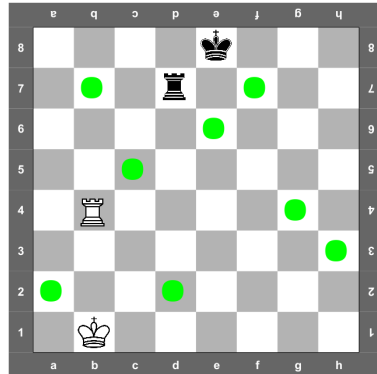
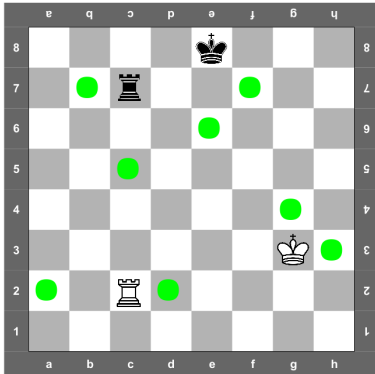
Classe :

Date :

La Tour – T, suite

/12

1. Voici 3 situations où les Blancs et les Noirs convoitent les pastilles vertes. /6
En 1 seul coup, combien de pastilles peuvent prendre Roi et tour de chaque camp ?
Attention, aucune pièce ne peut se faire prendre !

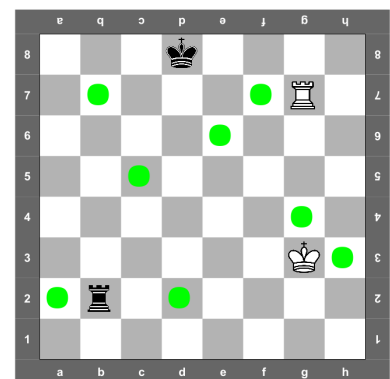
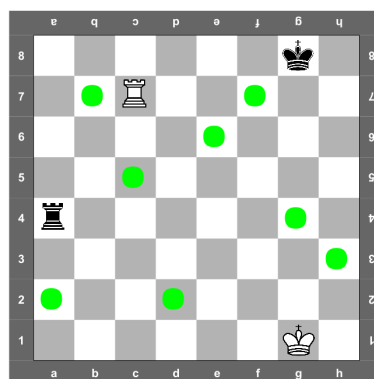
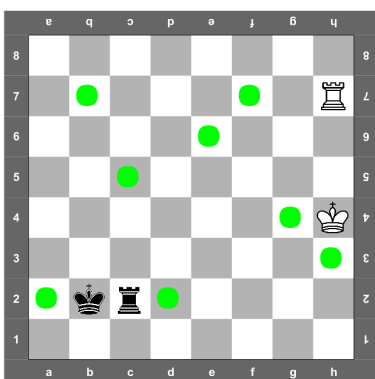


	Blancs	Noirs
R		
T		

	Blancs	Noirs
R		
T		

	Blancs	Noirs
R		
T		

2. Voici 3 autres situations où les Blancs et les Noirs convoitent toujours les pastilles vertes. /6
En 1 seul coup, combien de pastilles peut prendre chaque camp ?
Attention, aucune pièce ne peut se faire prendre !



Blancs	Noirs

Blancs	Noirs

Blancs	Noirs





Nom : 15

Prénom :

Classe :

Date :

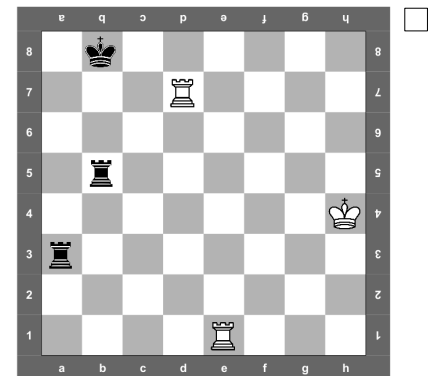
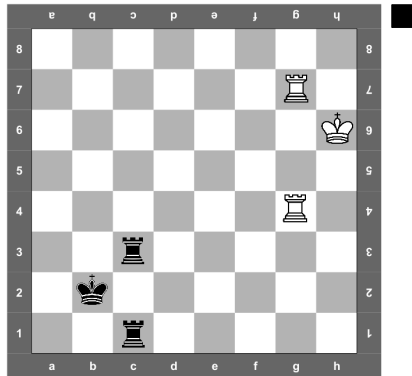
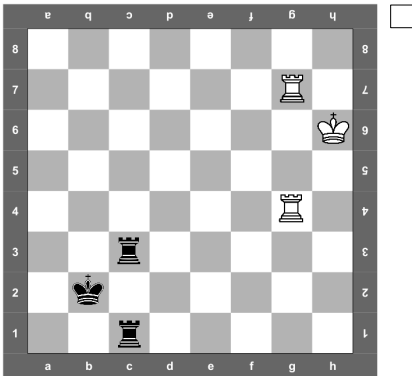
La Tour – T, suite

/18

1. Attaque du Roi.

/6

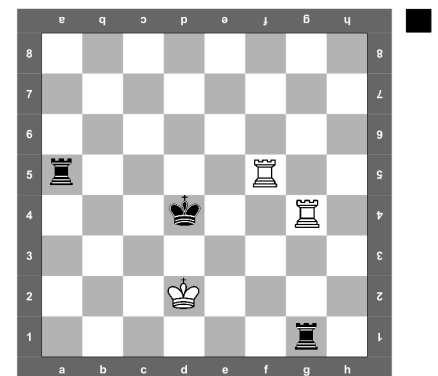
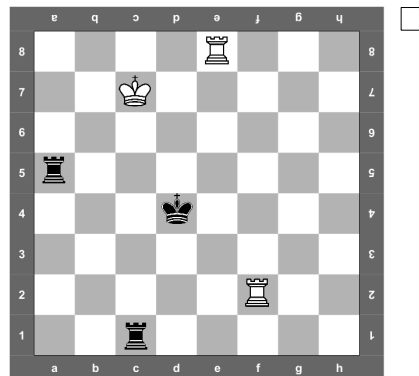
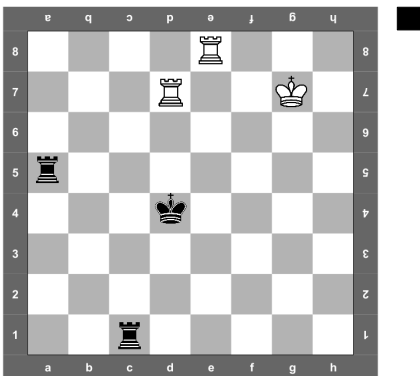
Trace à l'aide d'une flèche un coup pour attaquer le Roi.



2. Défense du Roi.

/6

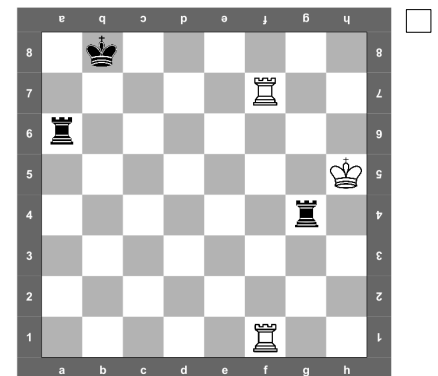
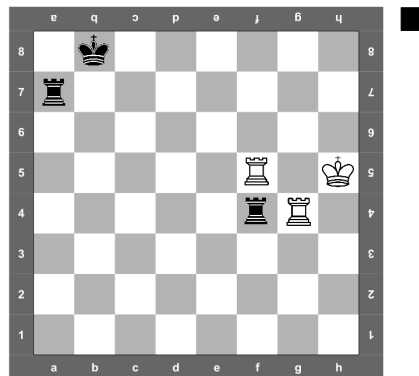
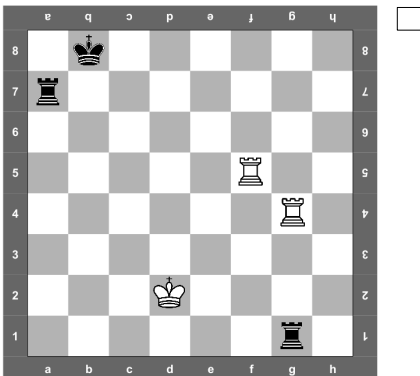
Trace à l'aide d'une flèche un coup pour défendre la Roi.



3. Prise de pièce.

/6

Trace à l'aide d'une flèche le meilleur coup pour prendre une pièce.





Nom :

18

Prénom :

Classe :

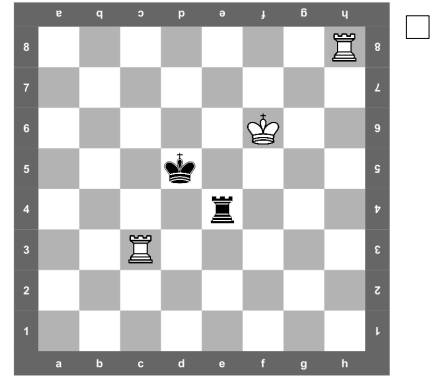
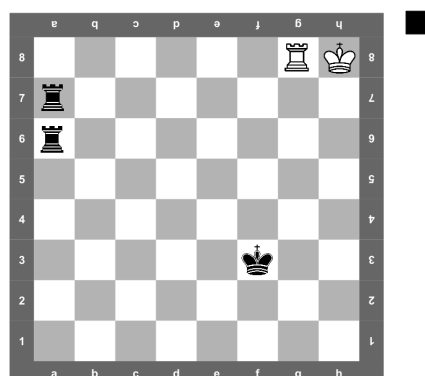
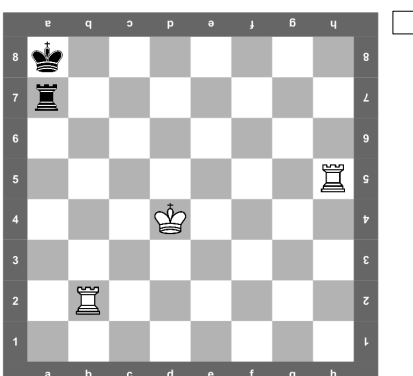
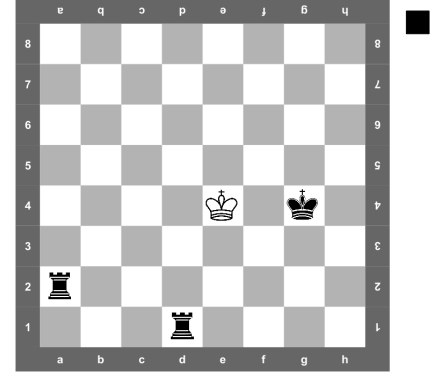
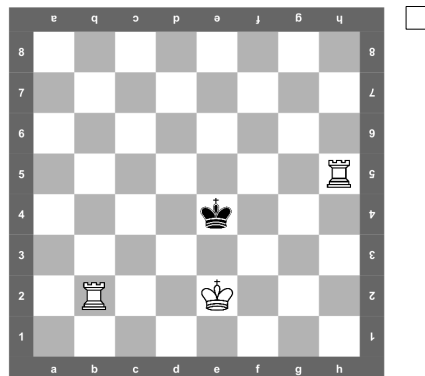
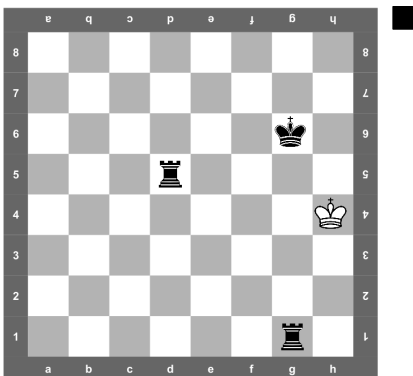
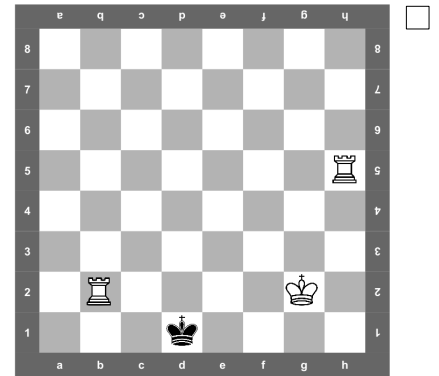
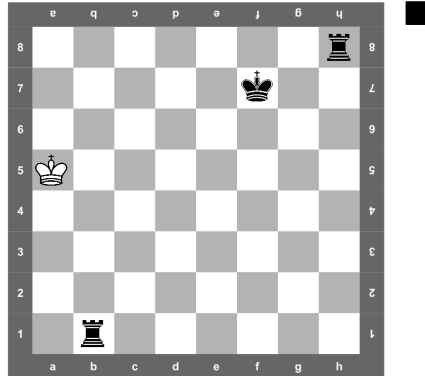
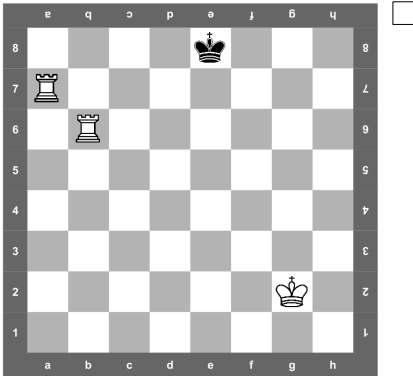
Date :

- Échec et mat 1

/9

Mats en 1 coup

Trace à l'aide d'une flèche le mouvement de la Tour qui mate le Roi adverse.





Nom :

19

Prénom :

Classe :

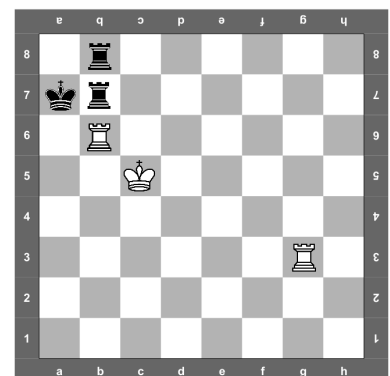
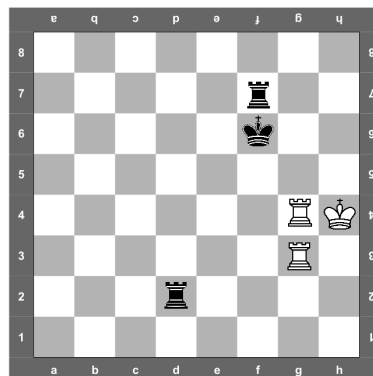
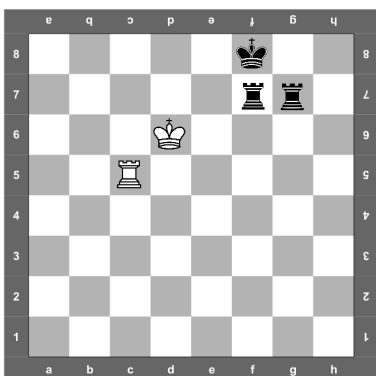
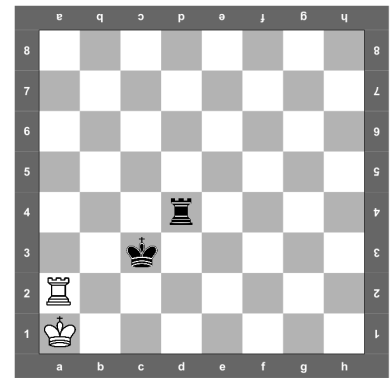
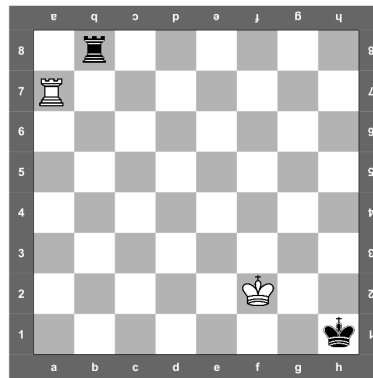
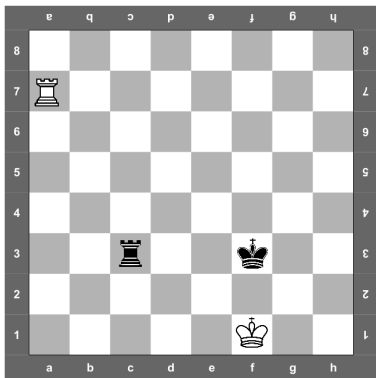
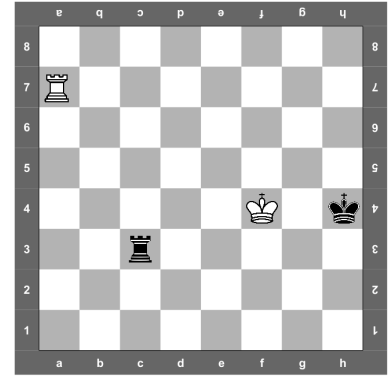
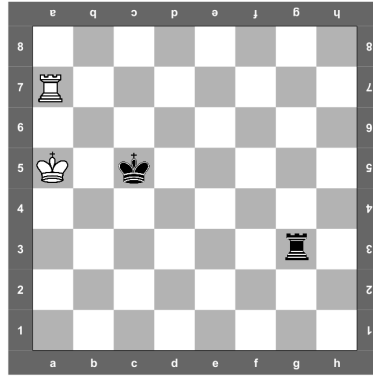
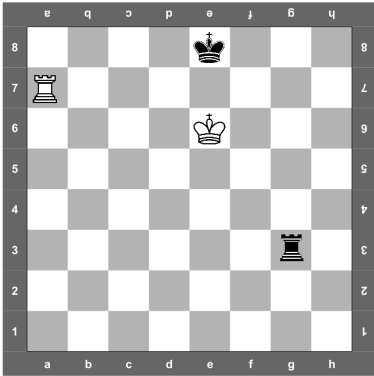
Date :

- Échec et mat 2

/9

Mats en 1 coup

Trace à l'aide d'une flèche le mouvement de la Tour qui mate le Roi adverse.





Nom :

21

Prénom :

Classe :

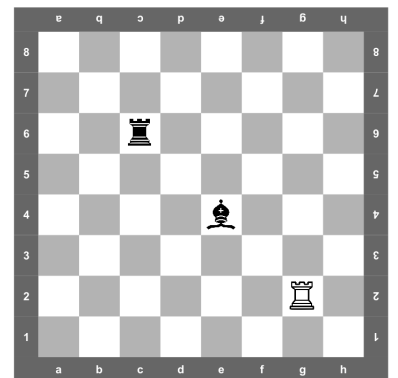
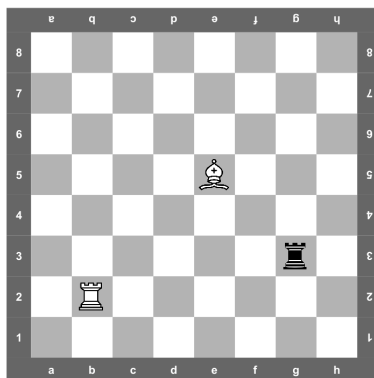
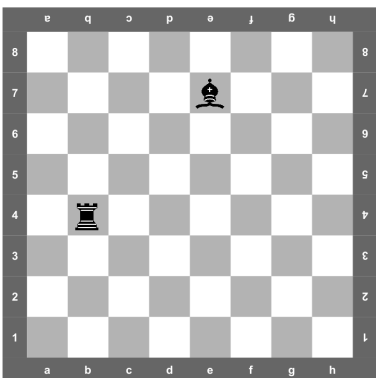
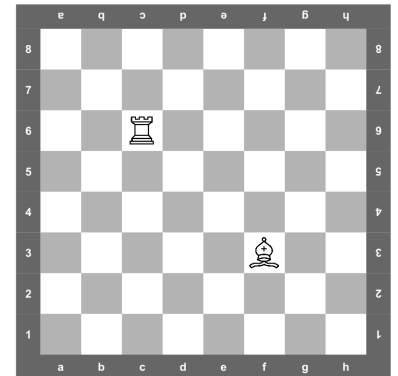
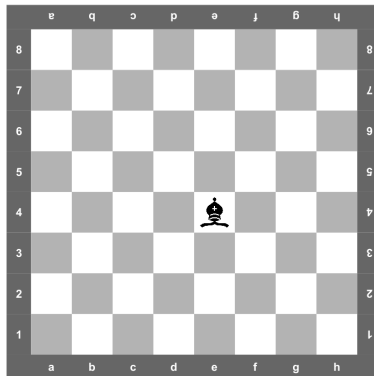
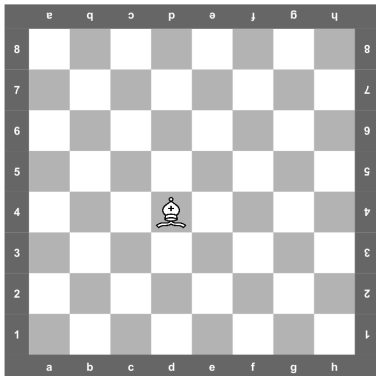
Date :

Le Fou - F

/20

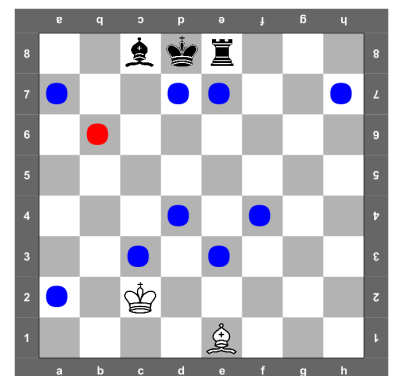
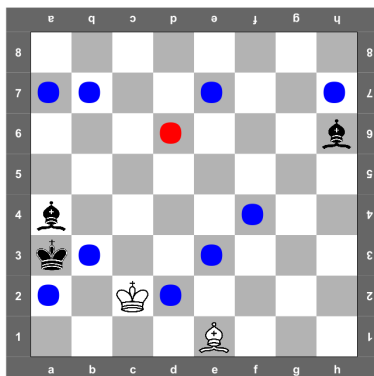
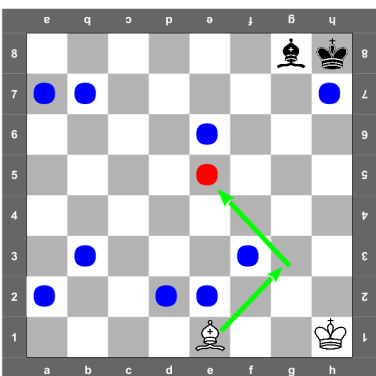
1. Indique d'une croix les différentes cases que le Fou peut atteindre en 1 coup.

/12



3. Le Fou Blanc qui est sur la case e1 doit se rendre sur la case marquée de la pastille rouge. Trace le plus court chemin. Inspire-toi du modèle.

/8





Nom : 22

Prénom :

Classe :

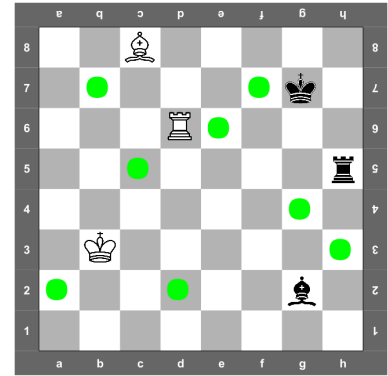
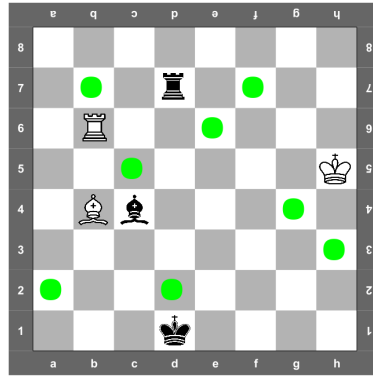
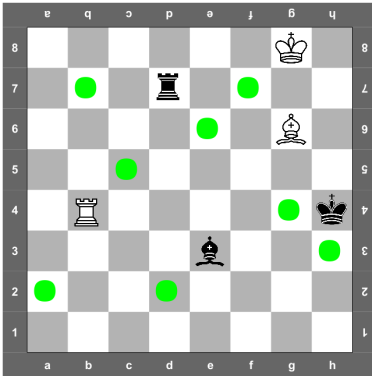
Date :

Le Fou – F, suite

/12

- 1. Voici 3 situations où les Blancs et les Noirs convoitent les pastilles vertes. En 1 seul coup, combien de pastilles peuvent prendre Roi, Tour et Fou de chaque camp ? Attention, aucune pièce ne peut se faire prendre !**

/6



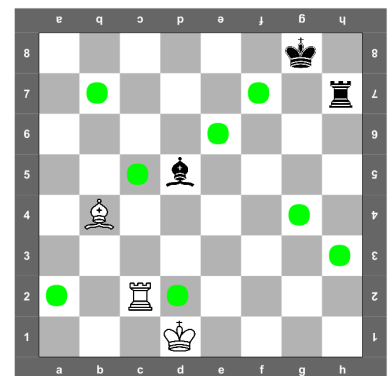
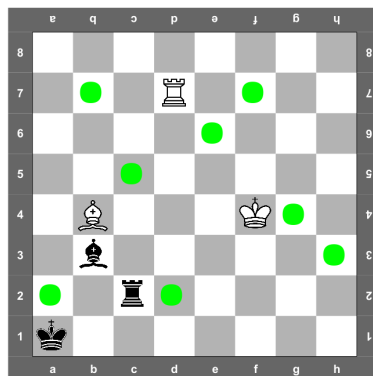
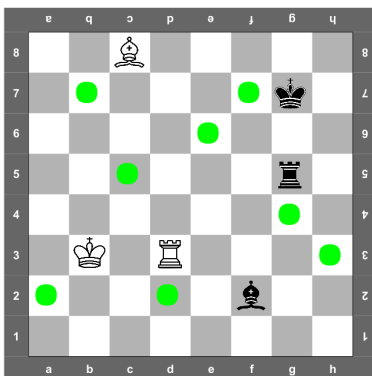
	Blancs	Noirs
R		
T		
F		

	Blancs	Noirs
R		
T		
F		

	Blancs	Noirs
R		
T		
F		

- 2. Voici 3 autres situations où les Blancs et les Noirs convoitent toujours les pastilles vertes. En 1 seul coup, combien de pastilles peut prendre chaque camp ? Attention, aucune pièce ne peut se faire prendre !**

/6



Blancs	Noirs

Blancs	Noirs

Blancs	Noirs





Nom :

23

Prénom :

Classe :

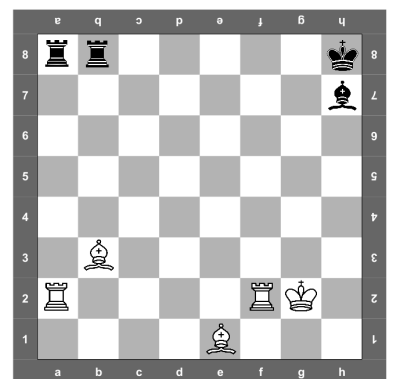
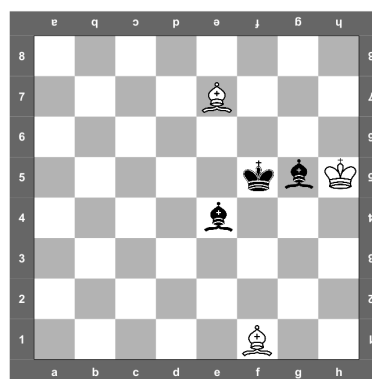
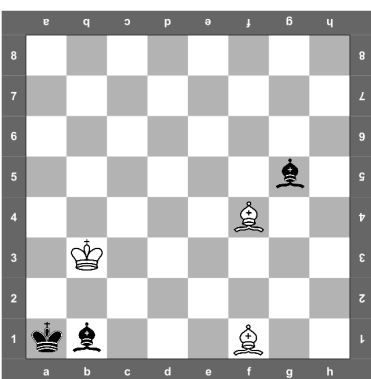
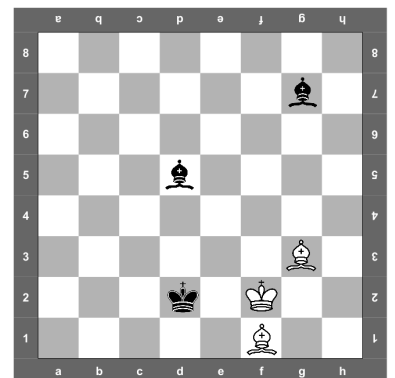
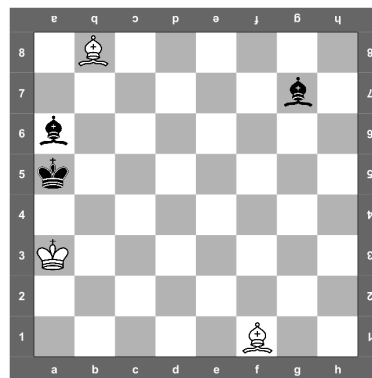
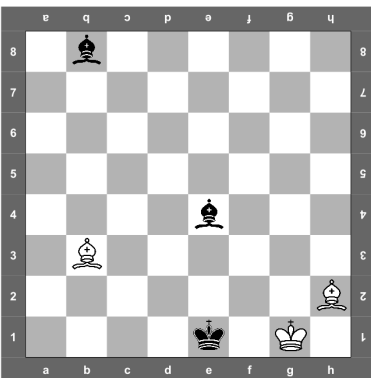
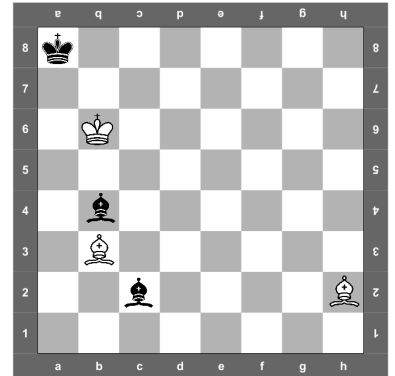
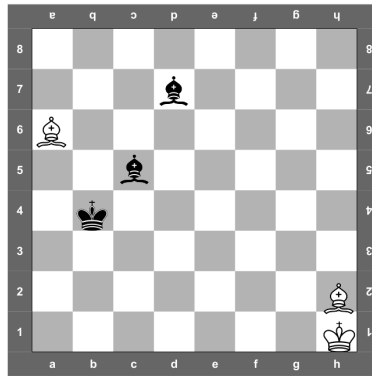
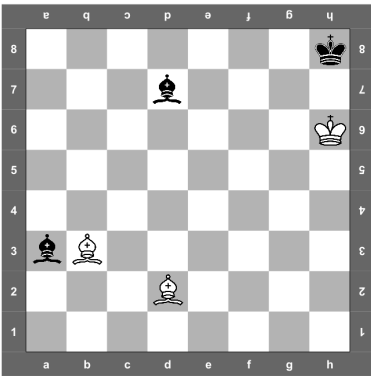
Date :

- Échec et mat 3

/9

Mats en 1 coup

Trace à l'aide d'une flèche le mouvement du Fou qui mate le Roi adverse.





Nom :

24

Prénom :

Classe :

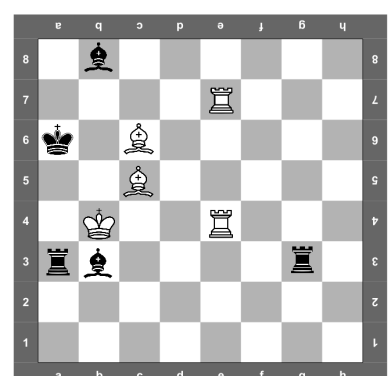
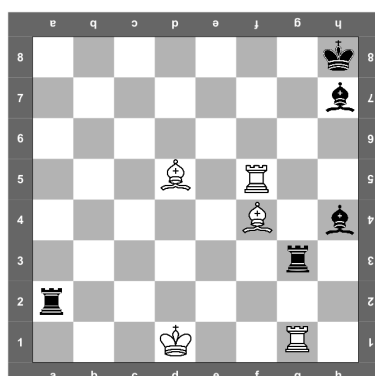
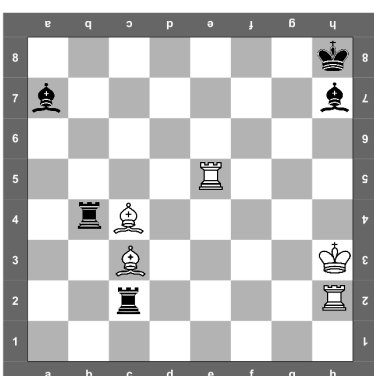
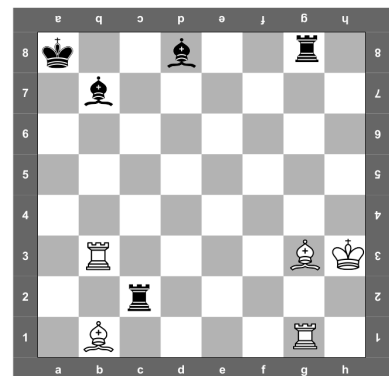
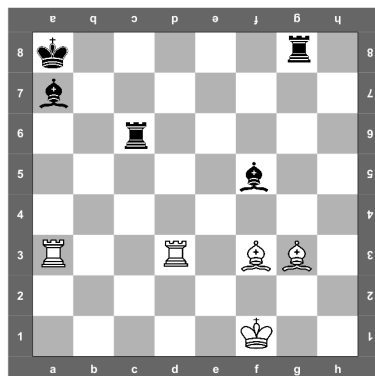
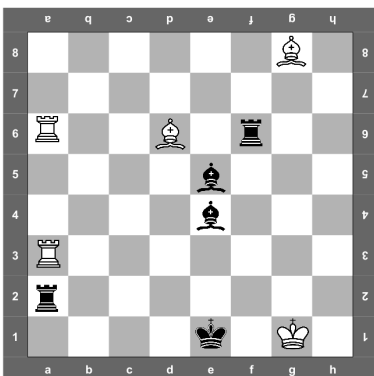
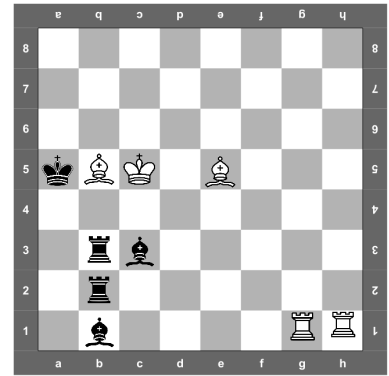
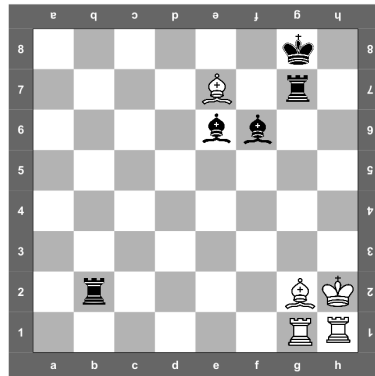
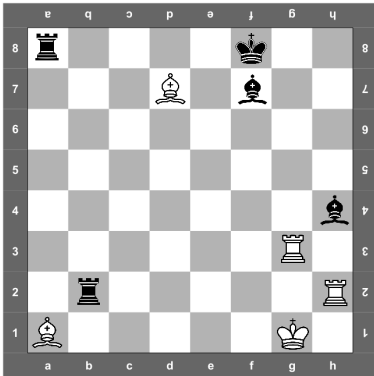
Date :

- Échec et mat 4

/9

Mats en 1 coup

Trace à l'aide d'une flèche le mouvement de la pièce qui mate le Roi adverse.





Nom :

26

Prénom :

Classe :

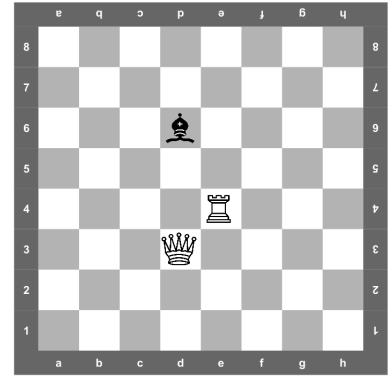
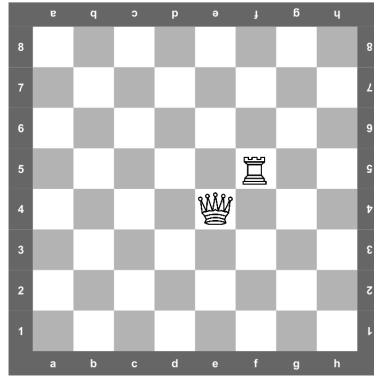
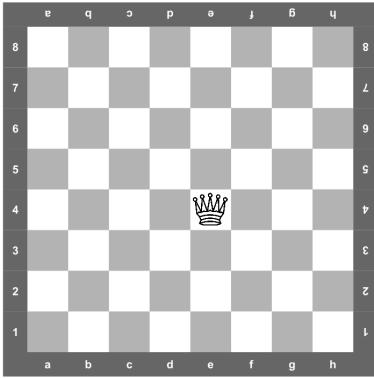
Date :

La Dame - D

/20

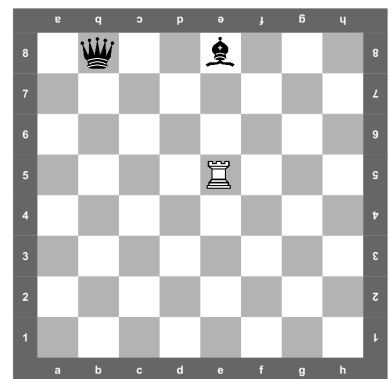
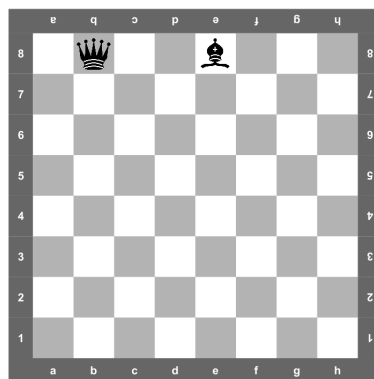
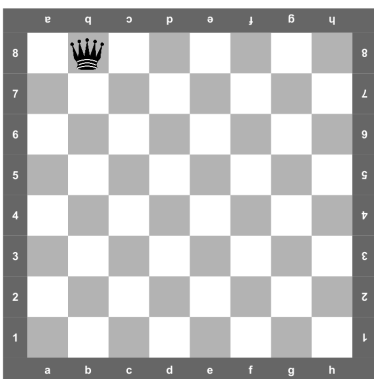
1. Indique d'une croix toutes les cases que peut atteindre la Dame Blanche en 1 coup.

/6



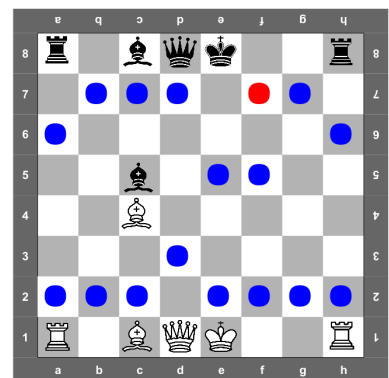
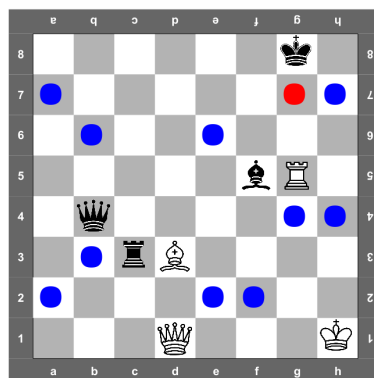
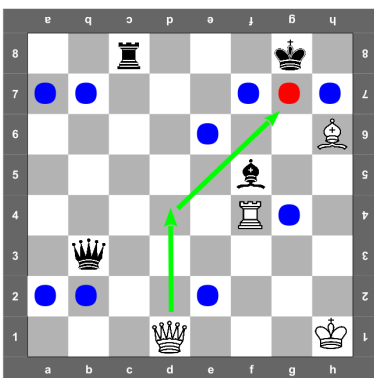
2. Indique d'une croix toutes les cases que peut atteindre la Dame Noire en 1 coup.

/6



3. La Dame Blanche qui est sur la case d1 doit se rendre sur la case marquée de la pastille rouge. Trace le plus court chemin. Inspire-toi du modèle.

/8





Nom : 27

Prénom :

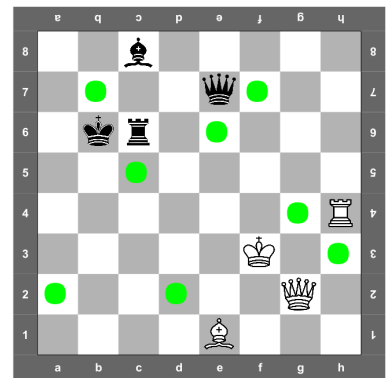
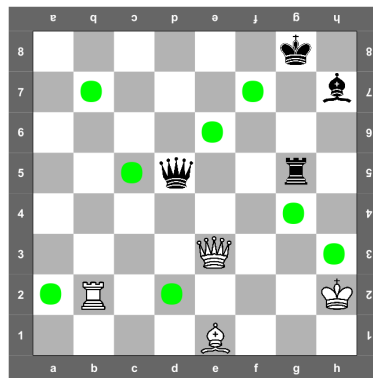
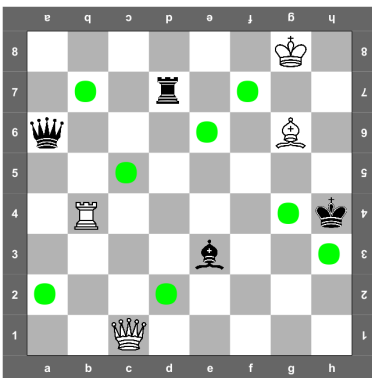
Classe :

Date :

La Dame – D, suite

/12

1. Voici 3 situations où les Blancs et les Noirs convoitent les pastilles vertes. /6
En 1 seul coup, combien de pastilles peuvent prendre Roi, Tour, Fou et Dame de chaque camp ?
Attention, aucune pièce ne peut se faire prendre !

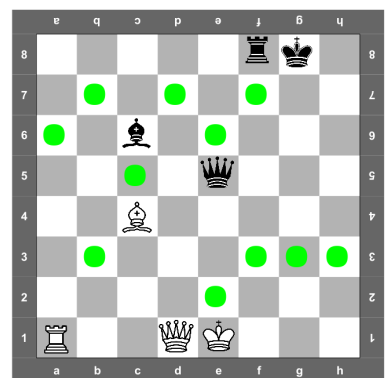
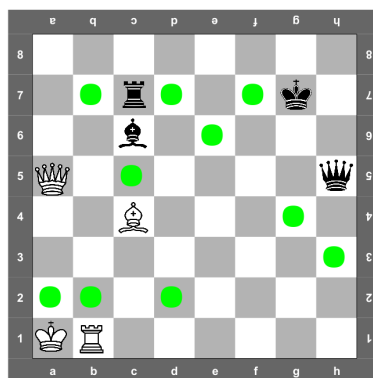
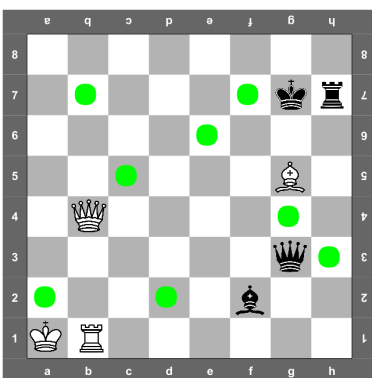


	Blancs	Noirs
R		
T		
F		
D		

	Blancs	Noirs
R		
T		
F		
D		

	Blancs	Noirs
R		
T		
F		
D		

2. Voici 3 autres situations où les Blancs et les Noirs convoitent toujours les pastilles vertes. /6
En 1 seul coup, combien de pastilles peut prendre chaque camp ?
Attention, aucune pièce ne peut se faire prendre !

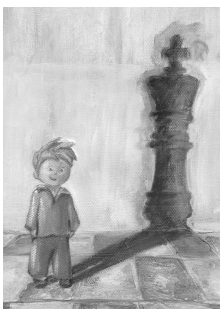


Blancs	Noirs

Blancs	Noirs

Blancs	Noirs





Nom :

29

Prénom :

Classe :

Date :

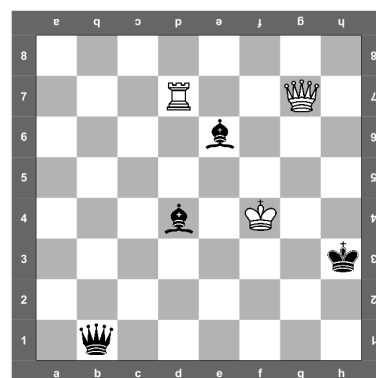
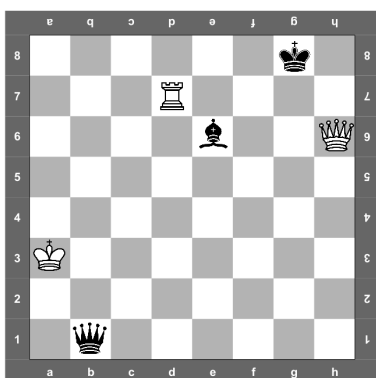
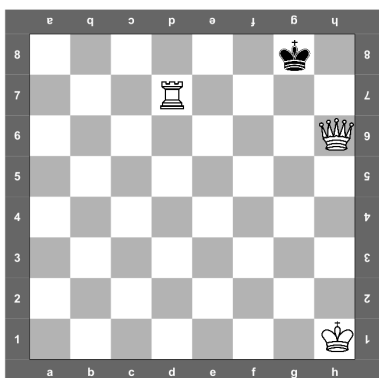
- Échec et mat 5

/9

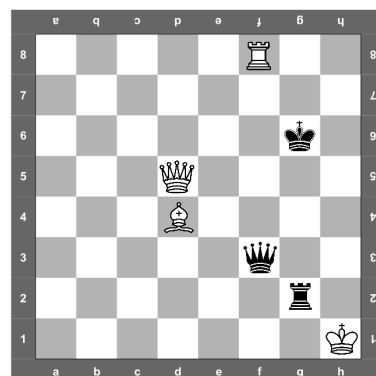
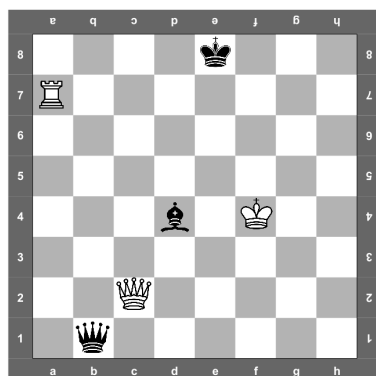
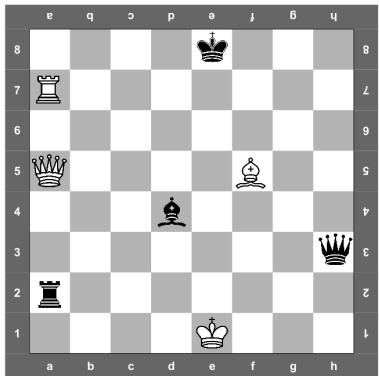
Mats en 1 coup

Trace à l'aide d'une flèche le mouvement de la Dame qui mate le Roi adverse.

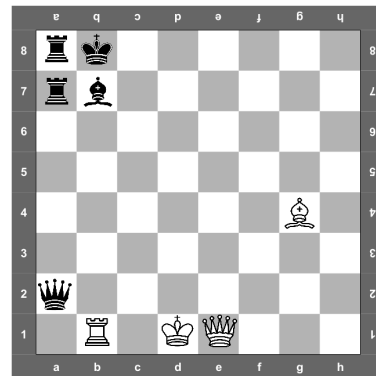
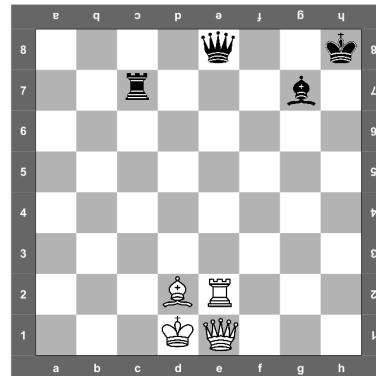
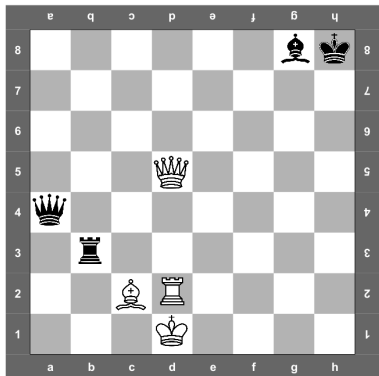
... le baiser de la mort !



... comme la Tour !



... comme le Fou !





Nom :

30

Prénom :

Classe :

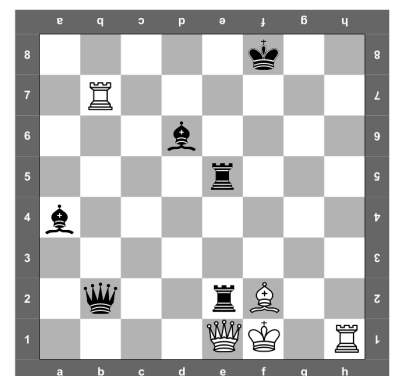
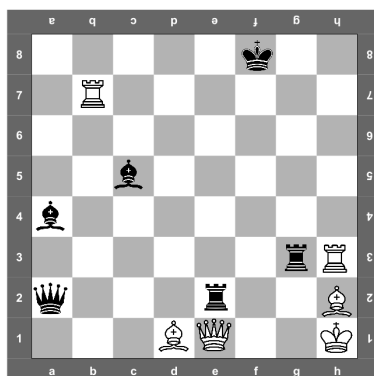
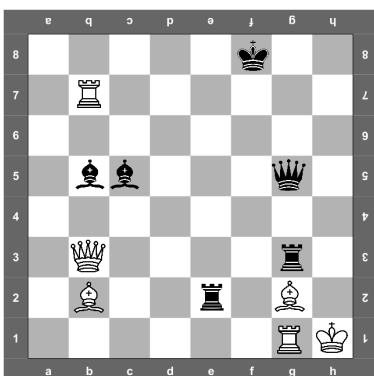
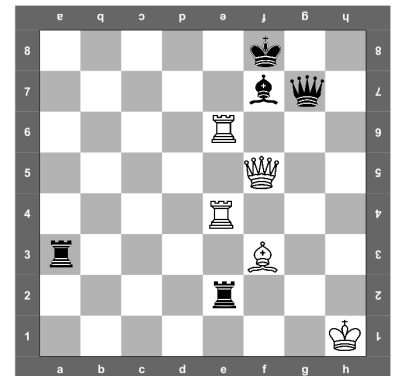
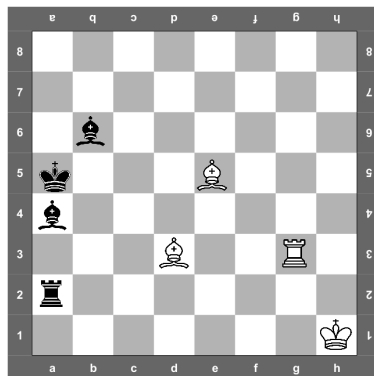
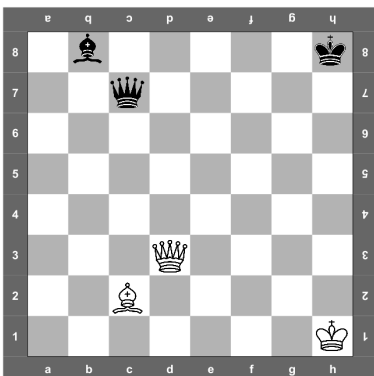
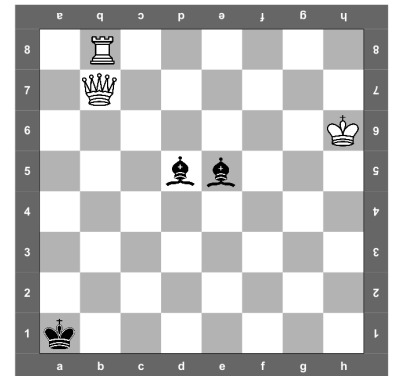
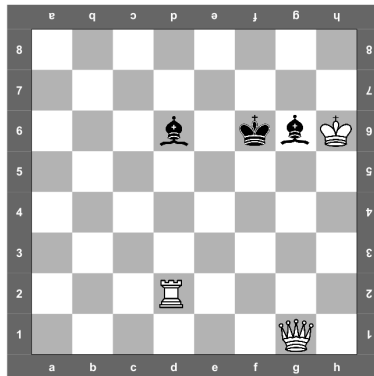
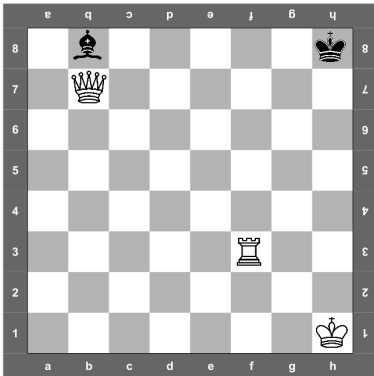
Date :

- Échec et mat 6

/9

Mats en 1 coup

Trace à l'aide d'une flèche le mouvement de la pièce qui mate le Roi adverse.





Nom :

32

Prénom :

Classe :

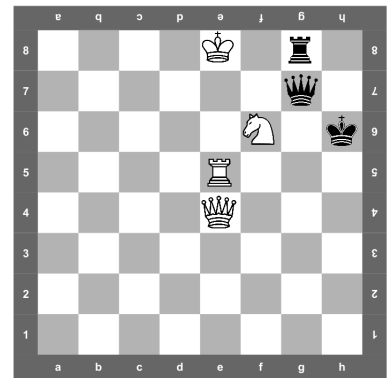
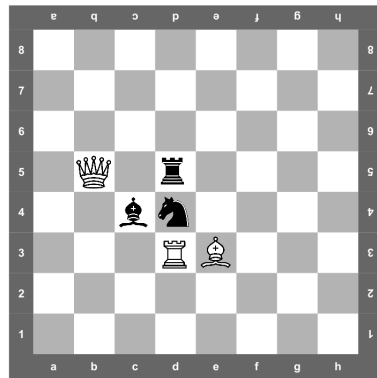
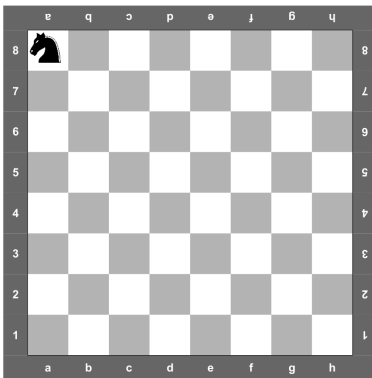
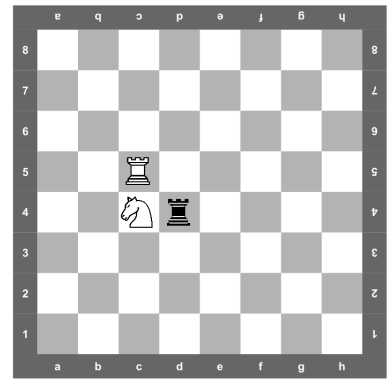
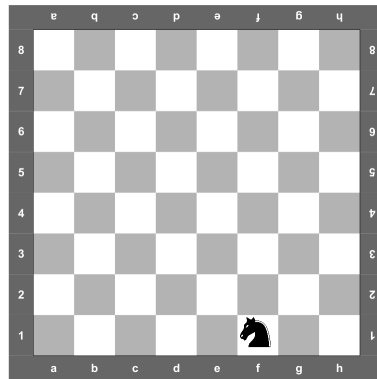
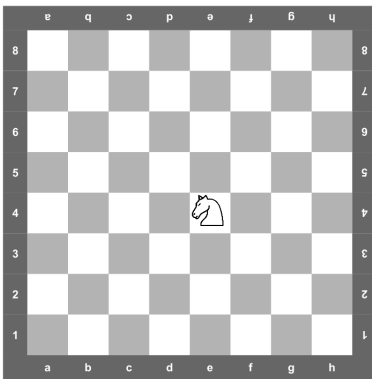
Date :

Le Cavalier - C

/20

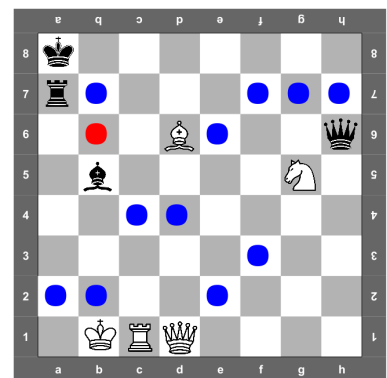
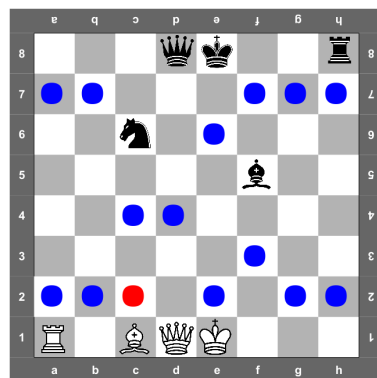
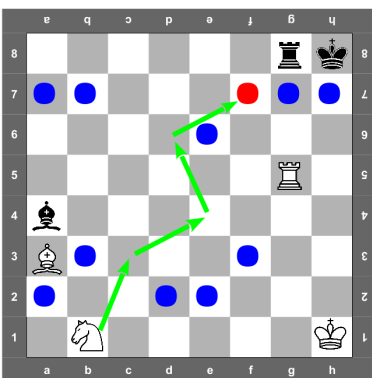
1. Indique d'une croix toutes les cases que peut atteindre le Cavalier.

/12



2. Le Cavalier doit se rendre sur la case marquée de la pastille rouge. Trace le plus court chemin. Inspire-toi du modèle.

/8





Nom :

33

Prénom :

Classe :

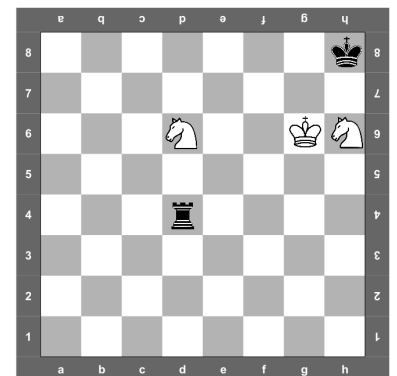
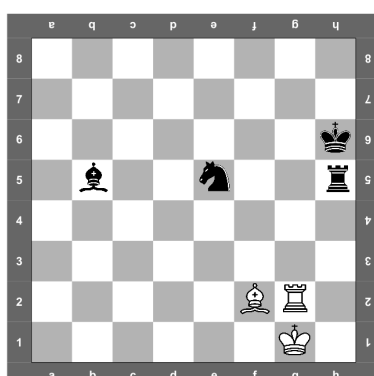
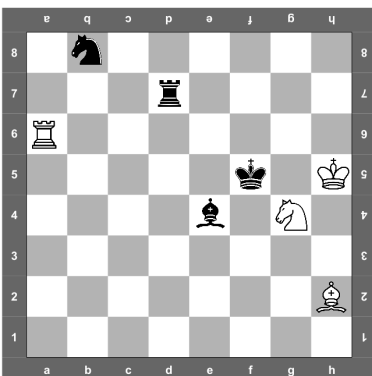
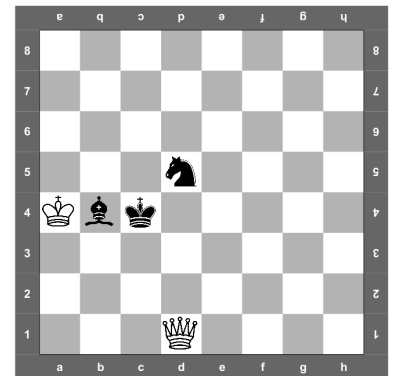
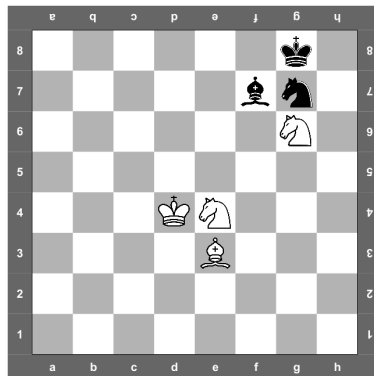
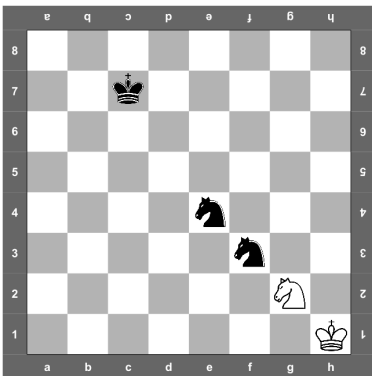
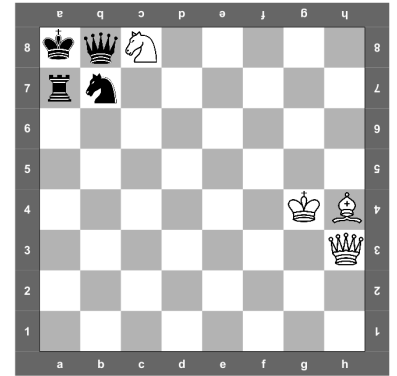
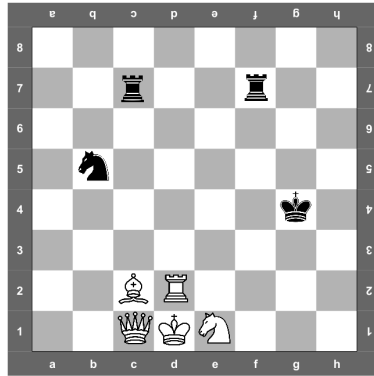
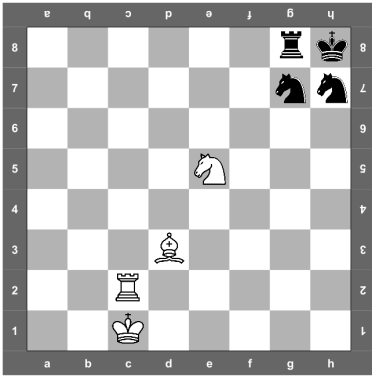
Date :

- Échec et mat 7

/9

Mats en 1 coup

Trace à l'aide d'une flèche le mouvement du Cavalier qui mate le Roi adverse.





Nom :

Prénom :

36

Classe :

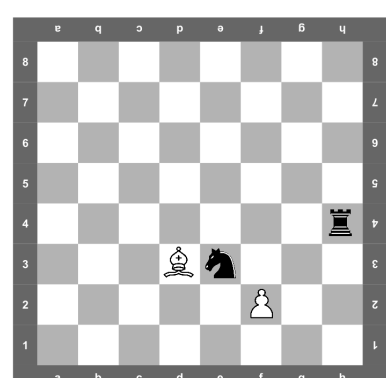
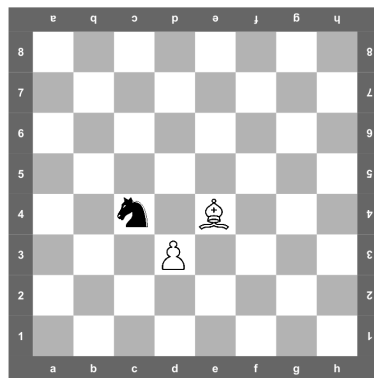
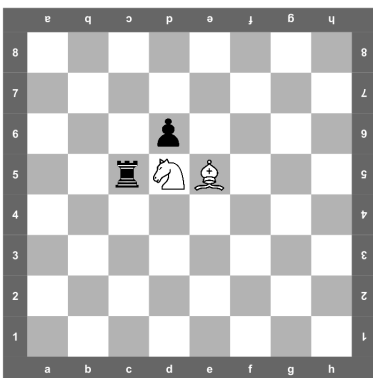
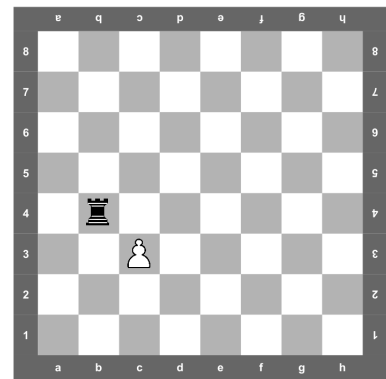
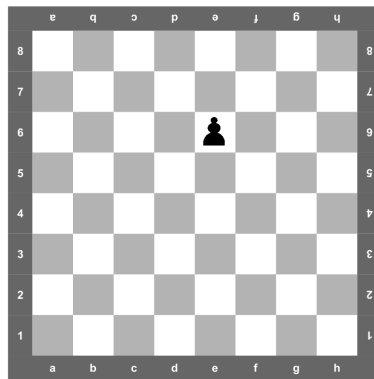
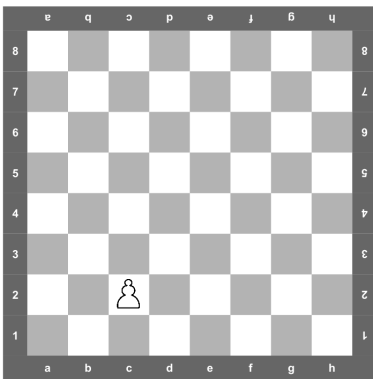
Date :

Le pion

/21

1. Indique d'une croix toutes les cases que peut atteindre le pion en 1 coup.

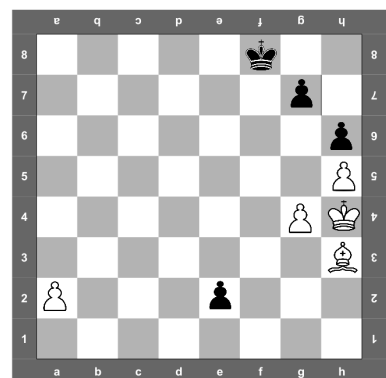
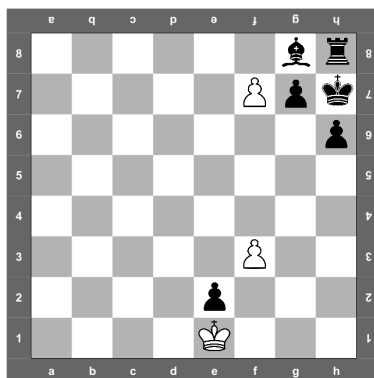
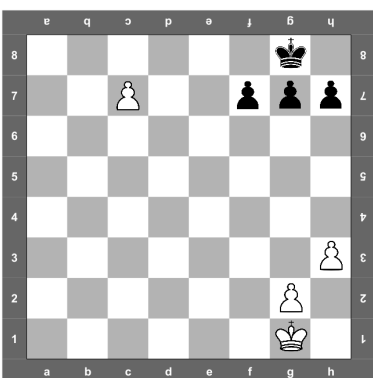
/12



2. Dans ces 3 situations, le pion va à promotion.

/9

Entoure la ou les pièce(s) de promotion qui matera ou materont l'adversaire.





Nom :

37

Prénom :

- Échec et mat 8

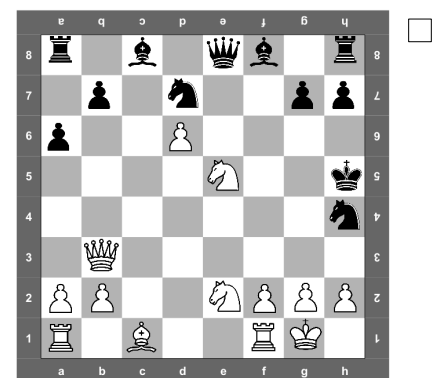
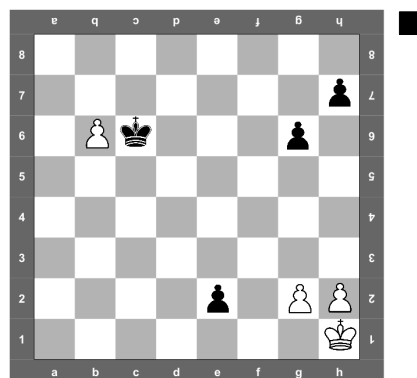
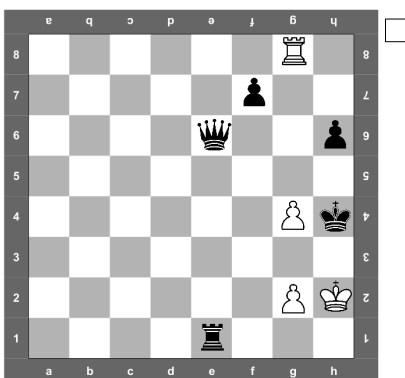
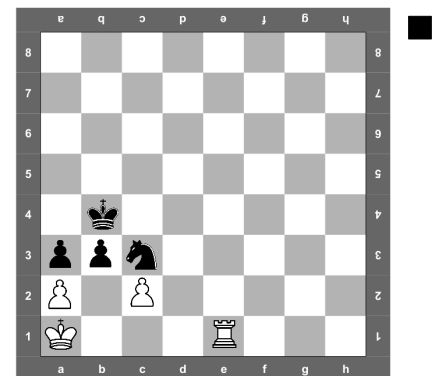
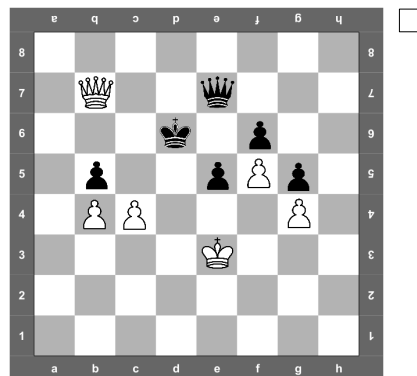
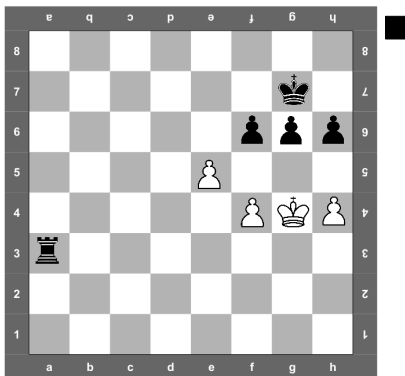
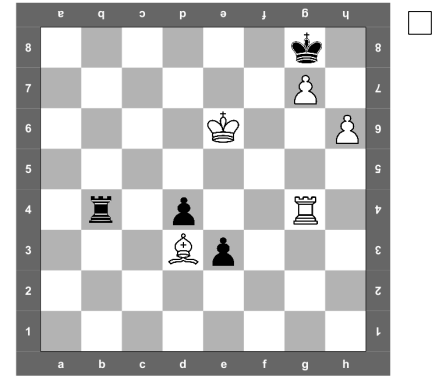
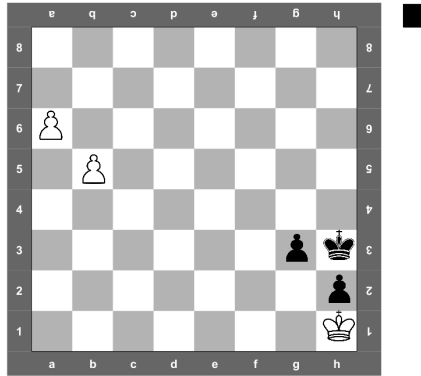
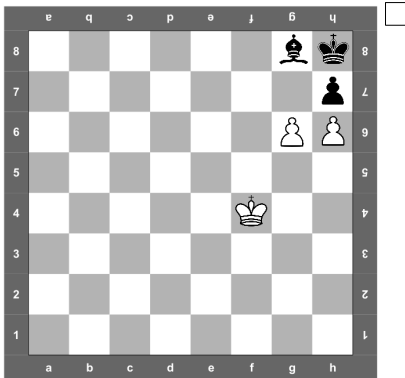
Classe :

/9

Date :

Mats en 1 coup

Trace à l'aide d'une flèche le mouvement du pion qui mate le Roi adverse.





Nom :

38

Prénom :

Classe :

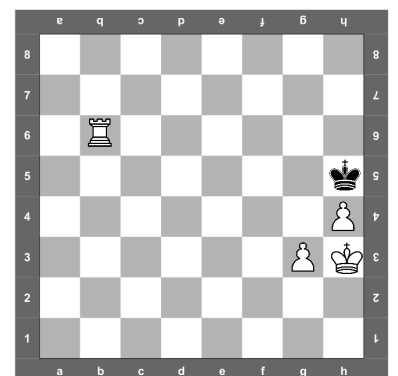
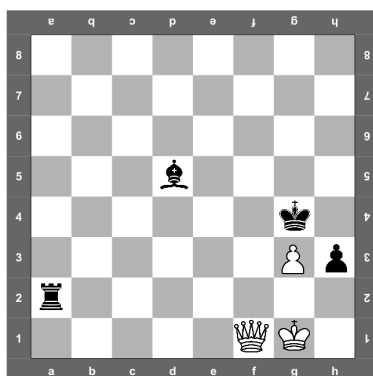
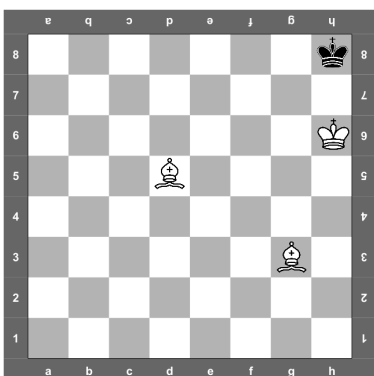
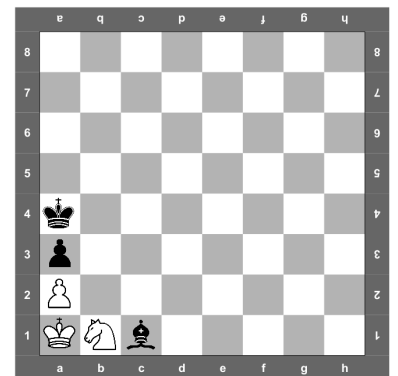
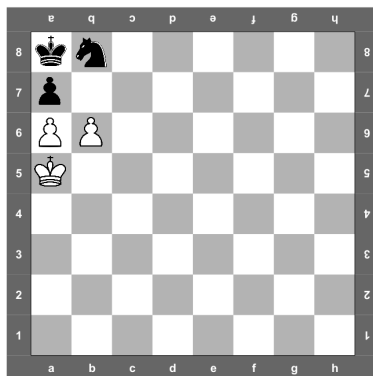
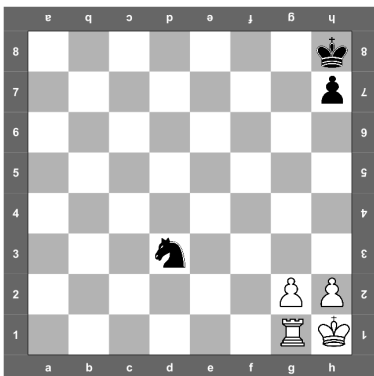
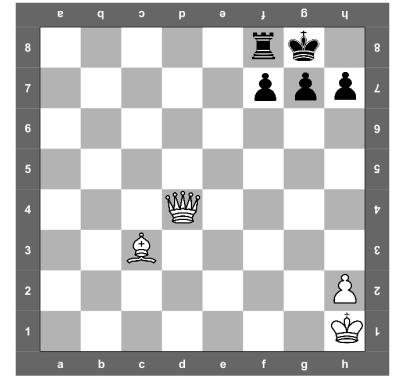
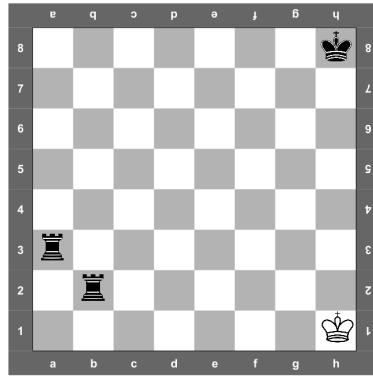
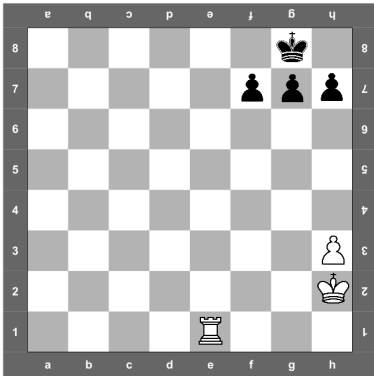
Date :

- Échec et mat 9

/9

Mats en 1 coup

Trace à l'aide d'une flèche le mouvement de la pièce qui mate le Roi adverse.





Nom :

Prénom :

Classe :

Date :

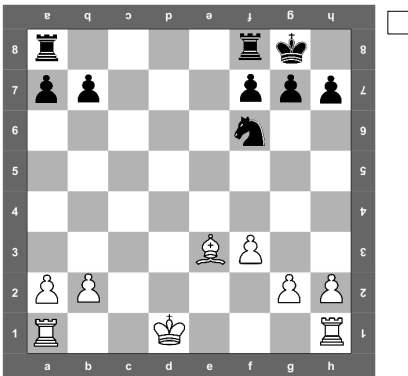
41

Le roque 0-0 / 0-0-0

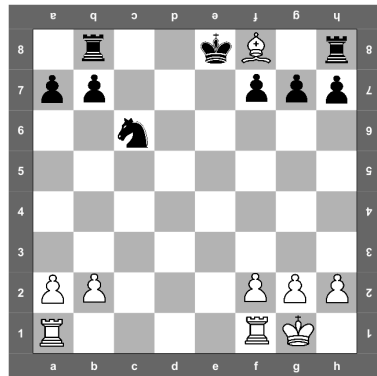
/9

Peut-on faire le petit roque ?

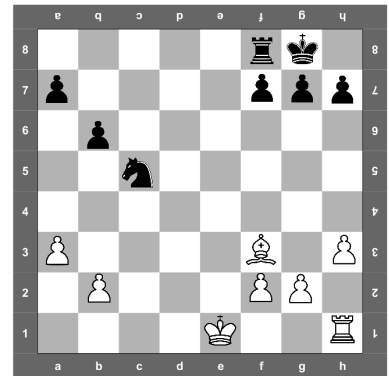
/3



Oui Non



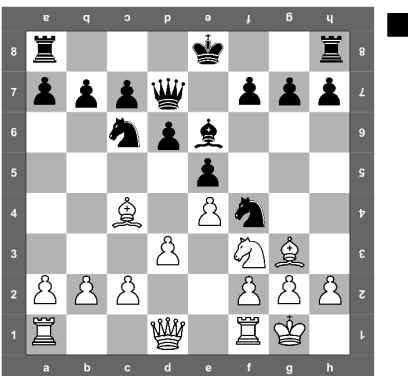
Oui Non



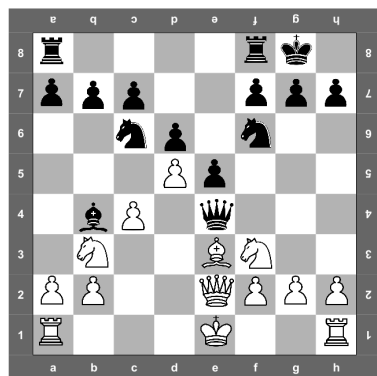
Oui Non

Peut-on faire le grand roque ?

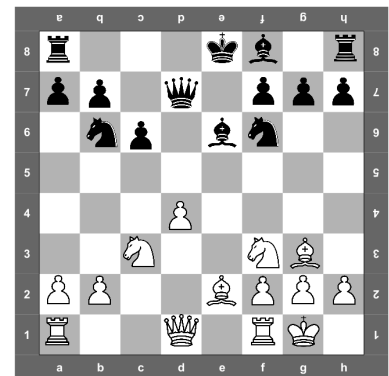
/3



Oui Non



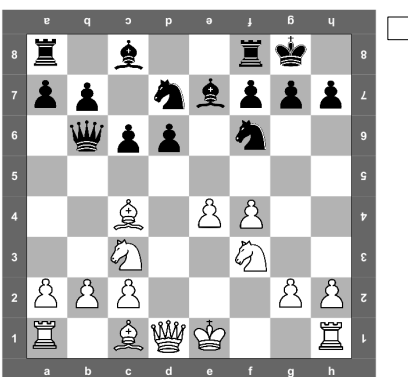
Oui Non



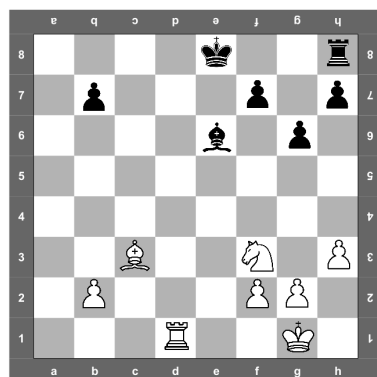
Oui Non

Peut-on faire le roque ?

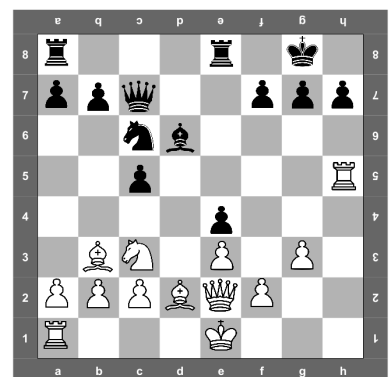
/3



Oui Non



Oui Non



Oui Non





Nom :

45

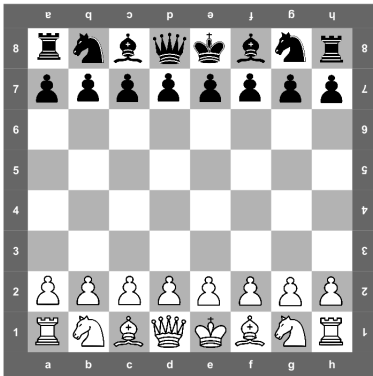
Prénom :

Classe :

Date :

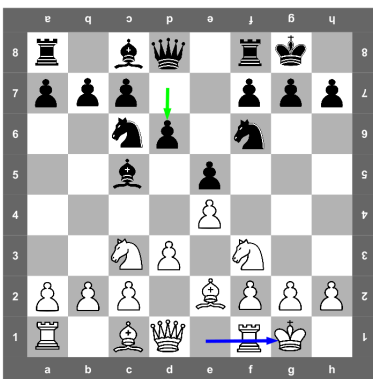
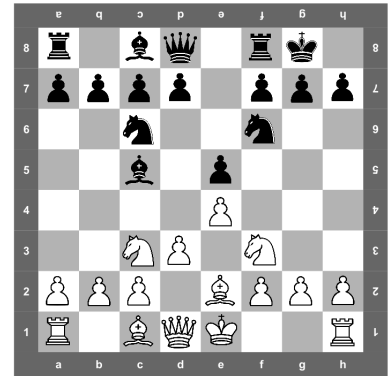
La notation

/9



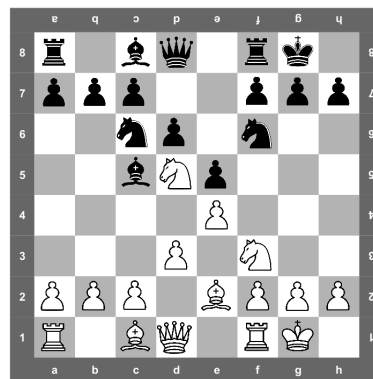
Voici la position après :

1. e4 e5
2. Cf3 Cc6
3. Cc3 Cf6
4. d3 Ff5
5. Fe2 0-0



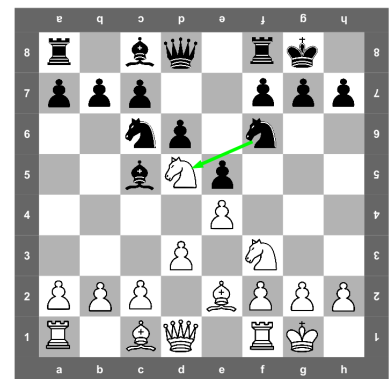
Note le 6e coup :

6.



Les Blancs jouent :

7. Cd5



Note le coup des Noirs :

7. Cd5

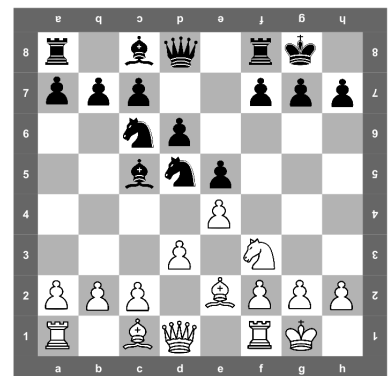
A présent, les Blancs vont jouer le 8e coup.

Ils prennent un Cavalier Noir.

1. Trace le coup sur l'échiquier à l'aide d'une flèche.

2. Note le coup des Blancs :

8.





Nom :

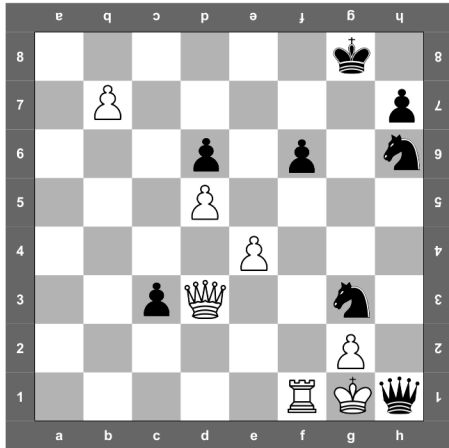
49

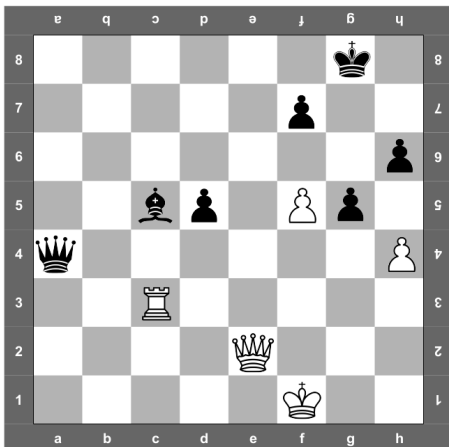
Prénom :

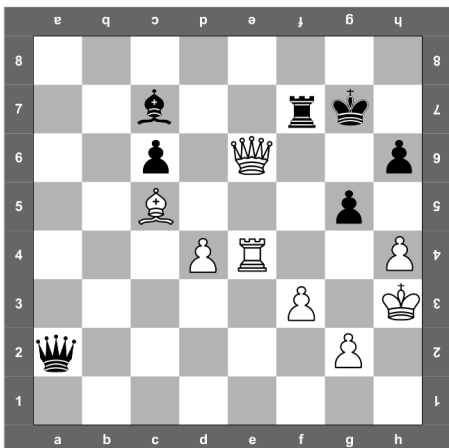
Classe :

Date :

**Jouer,
c'est décider**











Nom :

50

Prénom :

Classe :

Date :

- Échec et mat 10

/9

Mats en 1 coup

Trace à l'aide d'une flèche le mouvement de la pièce qui mate le Roi adverse.

